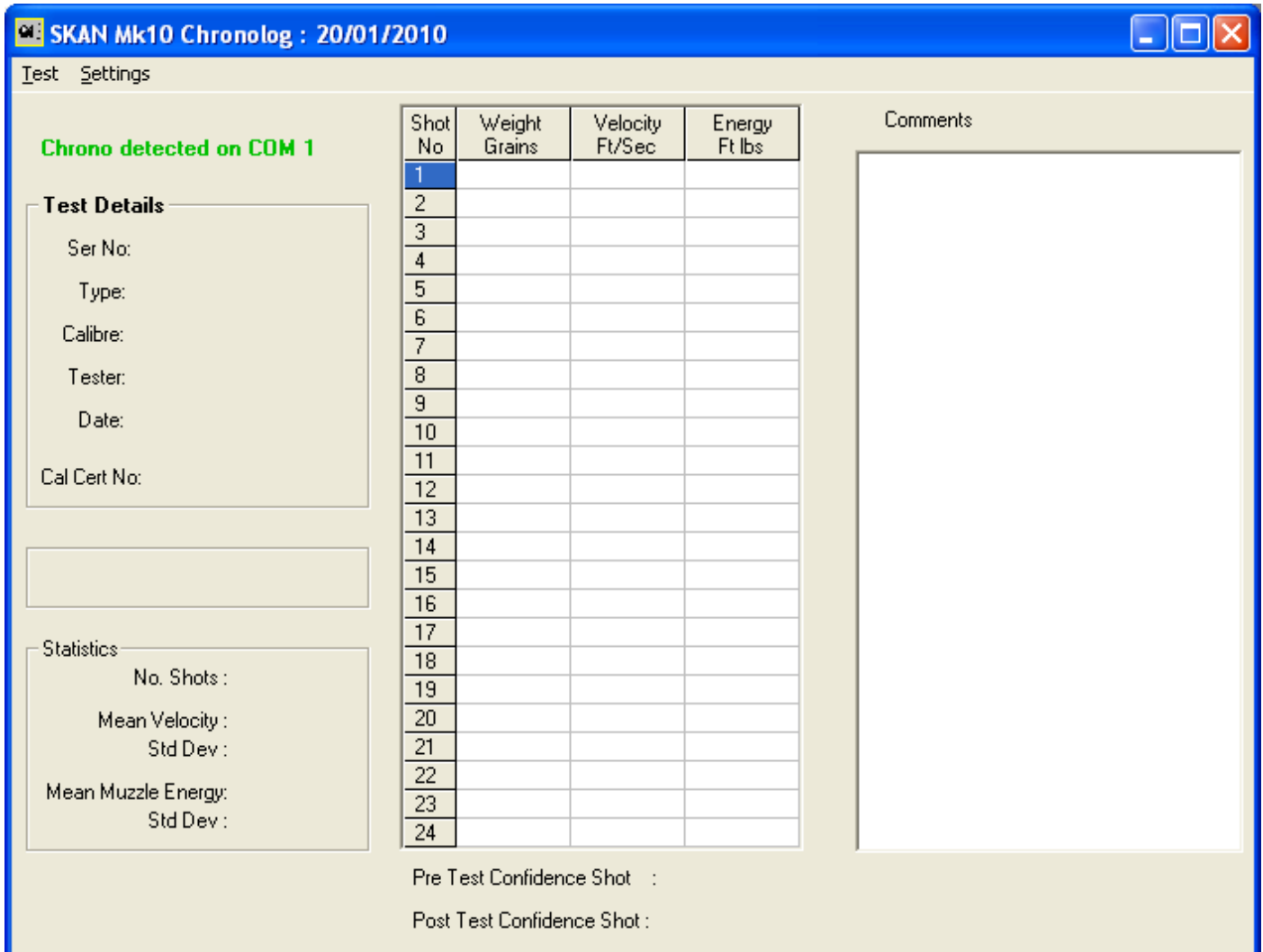


SKAN CHRONOLOG SOFTWARE 2010

System Requirements: Windows®95 or later, 10Mb free disk space, 64Mb RAM, CD ROM Drive and **ONE FREE SERIAL (COM) PORT**. To install the software insert the CD into the drive and run X:SETUP where X is the CD drive letter. Follow the on screen instructions to install the program components. Once installation is complete the program may be started by choosing **Programs|chronolog|chronolog** from the Start Menu.

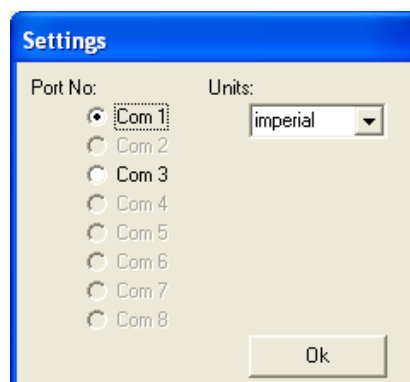


Near the top left of the program window the status of the com port is shown: **No COM Port open for Chrono** means that the currently selected com port is invalid. Please select another one by changing the default settings as per below.

If **Chrono not detected on COM** is shown please ensure that the chrono is connected to the specified port number, and that it is turned on. When the chrono is connected to the correct port & turned on, click on the message to recheck the status, you should see the message: **Chrono detected on COM**

When the program is run for the first time it may be necessary to alter the default settings.

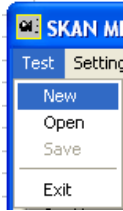
Click on Settings on the menu bar – note that this option is only available when the program is first opened, and is disabled after a file has been opened or a test executed. The Settings screen appears:



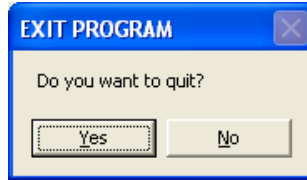
Choose the Com port you wish to connect the chrono to (Note that only ports available on your computer are shown) and select imperial or metric units from the dropdown box. Click the Ok button to save these settings.

The main screen appears with the data areas blank.

Click on Test Menu and the drop down menu appears:



If you choose Exit then the prompt appears:



Click on the appropriate button to end or continue the program.

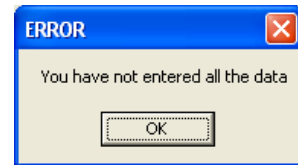
To capture data ensure that the chrono is connected to the correct port and powered .

Choose New from the Test Menu to reveal the Test Details Form:

Gun Type, Serial No. and Tester may have up to 30 characters. Only numbers 0-9 and decimal point may be used in the Calibre and Weight fields.

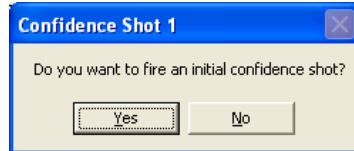
The Calibration Certificate No may be up to 12 characters long.

Type the details in the boxes and Click on the Ok button to enter logging mode or Cancel to abort the procedure. If you do not fill in all the details the error message appears:



Press Ok and then complete all the data fields.

Once the test details have been entered, before the program begins logging , you are asked:



If you choose Yes then the first shot fired (or self check performed) will be shown below the main data grid. The result will not be used in the statistical calculations.

NOTE: When the chrono has been set to continuous mode you may need to press the button more than once to activate the self check. Please refer to the chrono instructions.

The test details entered will be shown on the main form and the program is ready to receive data from the chrono.

The weight shown may be edited as required and will be recorded with the shot data. As each shot is fired, the velocity & energy are displayed in the large data grid to the right:

Shot No	Weight Grains	Velocity Ft/Sec	Energy Ft lbs
1	10.00	540.19	6.48
2	10.00	538.45	6.44
3	10.00	540.19	6.48

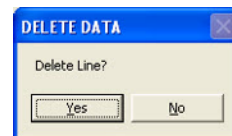
Should the chrono output an invalid result a warning is sounded and the program displays:



Concurrently, the statistics are calculated and displayed on the lower left of the form:

Statistics	
No. Shots :	4
Mean Velocity :	539.32
Std Dev :	0.58
Mean Muzzle Energy :	6.46
Std Dev :	0.01

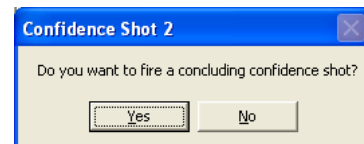
Data lines may be discarded by double clicking on the relevant line in the data grid.



Confirm or refute the action by clicking on the appropriate button.

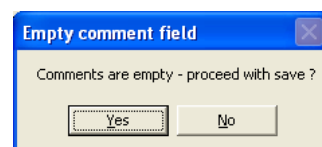
Continue until the desired number of shots have been fired. You may type any comments you wish into the box on the right of the form, these will be saved and printed with the test data. To end the test select Save from the Test menu.

If you chose to start with a confidence shot, you will see the message.



Click No to proceed straight to save or Yes to fire another confidence shot . Fire the shot (or perform self check) and select Save from the menu again.

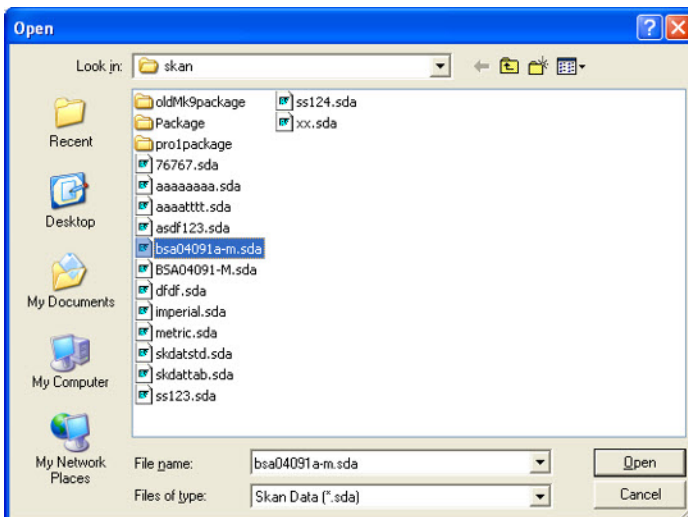
If you have left the comments box blank you will also see the message.



Select No if you wish to enter any comments, do so & then select Save from the menu again.

Select Yes to continue to save the file.

The standard save dialog box appears with the suggested filename shown as the serial number. Choose Save to save the data - files are saved with an **sda** extension



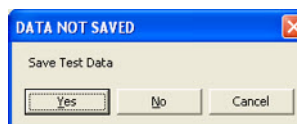
Once the file is saved the Print button will appear at the bottom left of the form.



Click on it to print the form and its data.

Previous tests may be recalled by choosing Open from the Test menu. The standard dialog box appears and the chosen file may be selected. The data and statistics are displayed on the form and this may be printed via the Print button.

Whilst a new test is underway, any attempt to load a data file or start a new test before the data is saved displays the message:



NOTE: Clicking No will abandon the data.

The test results are saved in a plain ascii text format that can be imported into word processors & manipulated as desired. The format of the file is:

Skan Chronoscope Data: IMPERIAL
09/06/2004
Meteor
.22
BSA04091-M
P Selby

15
10.00 743.97 12.29
10.00 743.97 12.29
10.00 743.14 12.27
10.00 743.14 12.27
10.00 743.14 12.27
10.00 743.14 12.27
10.00 743.14 12.27
10.00 743.14 12.27
10.00 743.97 12.29
10.00 743.97 12.29
10.00 743.14 12.27
10.00 743.14 12.27
10.00 743.14 12.27
10.00 743.14 12.27
10.00 743.14 12.27
10.00 743.14 12.27

- a2010331
- b743.14
- c743.97

These are the comments typed in the comment box. They may be several lines long.

Title and units
Date of Test
Type of Gun
Calibre
Serial No
Tester
No of shots fired (=NSF)
NSF lines of data:
Weight – Velocity - Energy

Calibration Certificate Number
Confidence shot 1 velocity
Confidence shot 2 velocity
Comments

} Ignore leading ←a,b,c

CAUTION

If you intend to manipulate the data in the file please copy the sda file to another e.g. txt file and manipulate this. If you edit the sda file it may render it unreadable by the chronolog software.